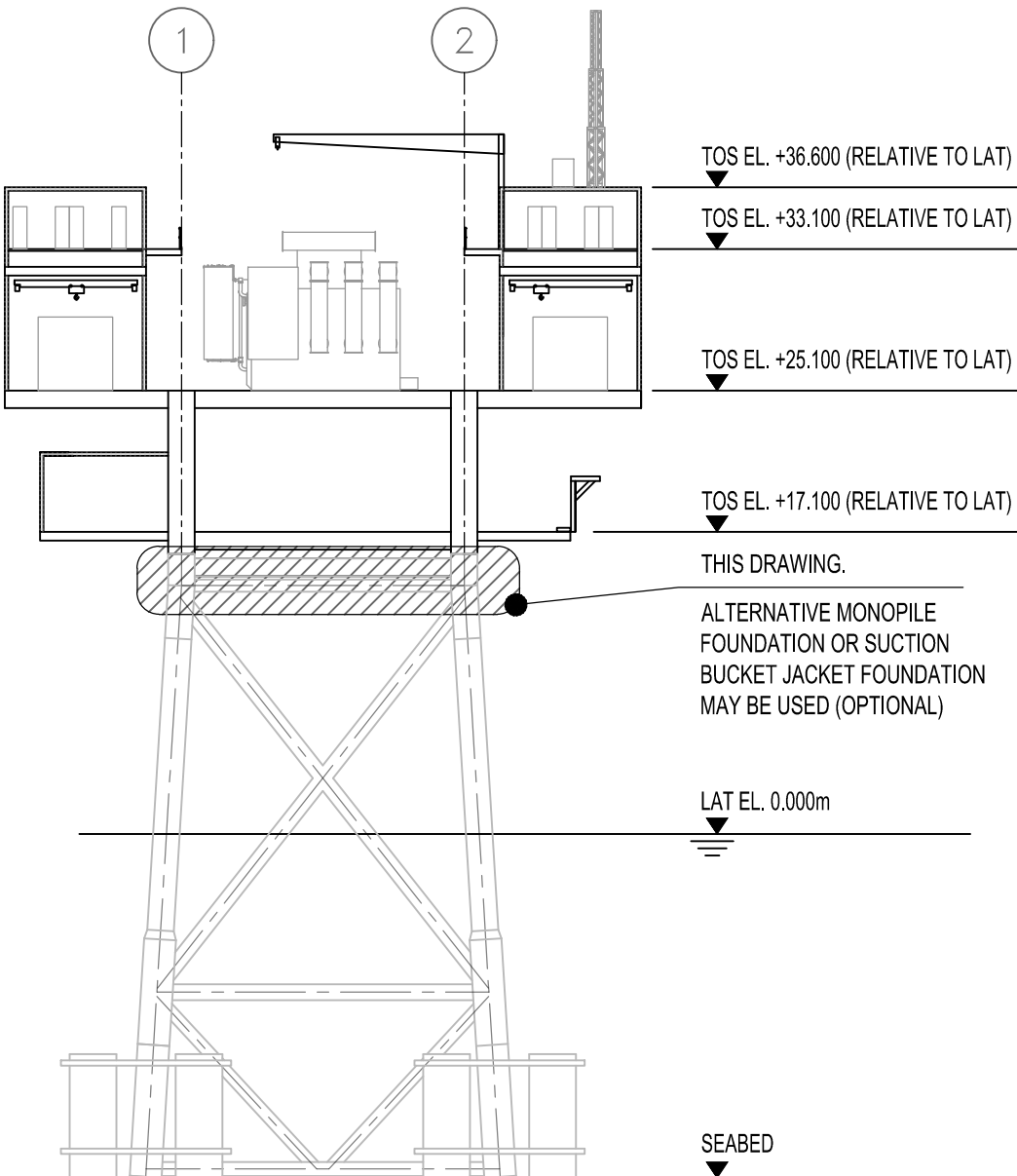


CABLE DECK @ TOS. EL. + 15.600
(RELATIVE TO LAT)

LEGEND:

- PLATE
- GRATE
- ESCAPE / ACCESS ROUTE

KEY PLAN (FRONT ELEVATION)



GENERAL NOTES

- ALL DIMENSIONS AND LEVELS ARE IN METRES UNLESS NOTED OTHERWISE.
- MINIMUM OSP TOPSIDE LENGTH OF 30 METRES AND A MAXIMUM TOPSIDE LENGTH OF 45 METRES.
- MINIMUM OSP TOPSIDE WIDTH OF 30 METRES AND A MAXIMUM TOPSIDE WIDTH OF 45 METRES.
- OSP TO HAVE A MINIMUM TOPSIDE UPPER ELEVATION OF 30 METRES LAT AND A MAXIMUM TOPSIDE UPPER ELEVATION OF 55 METRES LAT (INCLUDING PLANT, EQUIPMENT, STRUCTURES AND TELECOMMUNICATIONS MAST).
- FINAL ORIENTATION OF PLATFORM TO BE FIXED DURING DETAILED DESIGN.
- DIMENSIONAL INFORMATION GIVEN ON THIS DRAWING THAT IS NOT A 'MAXIMUM' OR 'MINIMUM' IS AT THE PLANNING STAGE AND IS SUBJECT TO DEVELOPMENT PERMISSION. MATTERS OF TECHNICAL DETAIL ARE SUBJECT TO PROCUREMENT AND DETAILED DESIGN.
- OSP FOUNDATION TO BE A MONOPILE, MULTI-LEG PILED JACKET, OR MULTI-LEG SUCTION BUCKET JACKET DESIGN DEPENDENT ON THE SELECTED SUPPLIER'S DESIGN SPECIFICATION AND WILL BE DESIGNED BY STRUCTURAL AND FOUNDATION ENGINEERS AT DETAILED DESIGN STAGE.
- LAT DENOTES 'LOWEST ASTRONOMICAL TIDE'.
- EL DENOTES 'ELEVATION'.
- TOS DENOTES 'TOP OF STEEL'.

200584-LYT-L-4001-01 to 07		EQUIPMENT LAYOUT DRAWINGS 1 to 7	
DRAWING No.		TITLE	
REFERENCE DRAWINGS			
DRAWING STATUS		FINAL	
DISCLAIMER			
THIS IS MADE AVAILABLE "AS IS" AND NO WARRANTIES ARE GIVEN OR LIABILITIES OF ANY KIND ARE ASSUMED WITH RESPECT TO THE QUALITY OF SUCH INFORMATION, INCLUDING, BUT NOT LIMITED, TO ITS FITNESS FOR A SPECIFIC PURPOSE, NON-INFRINGEMENT OF THIRD PARTY RIGHTS OR ITS CORRECTNESS. THE REPRODUCTION, DISTRIBUTION AND UTILISATION OF THIS DOCUMENT AS WELL AS THE COMMUNICATION OF ITS CONTENTS TO OTHERS WITHOUT EXPLICIT AUTHORISATION IS PROHIBITED.			
COPIES - DIGITAL OR PRINTED ARE NOT CONTROLLED.			
MAP NOTES / DATA SOURCES:			
© ORDNANCE SURVEY IRELAND 2023 © TAILTE EIREANN (CYSL50270365) NOT TO BE USED FOR NAVIGATION			
© BRITISH CROWN AND OCEANNWIZE, 2003. ALL RIGHTS RESERVED. LICENCE No. EMS-EK645692			
NOT TO BE USED FOR NAVIGATION.			
PROJECT TITLE:		DUBLIN ARRAY	
DRAWING TITLE:		EQUIPMENT LAYOUT - CABLE DECK	
DRAWING NUMBER:		PAGE NUMBER:	
200584-LYT-L-4001-02		2 OF 7	
VER	DATE	REMARKS	DRAW CHECK APRD
00	08/10/24	ISSUED FOR PLANNING	MPF JJ JJ
SCALE:	1:100	DATUM:	IRENET95
PLOT SIZE:		PRJ:	IRENET95 IRISH TRANSVERSE MERCATOR
0 1 2 4 6 8 10m.			
(1:100)			
Petrofac		DublinArray	
Generation for generations		Kish Offshore Wind Limited - Bray Offshore Wind Limited	